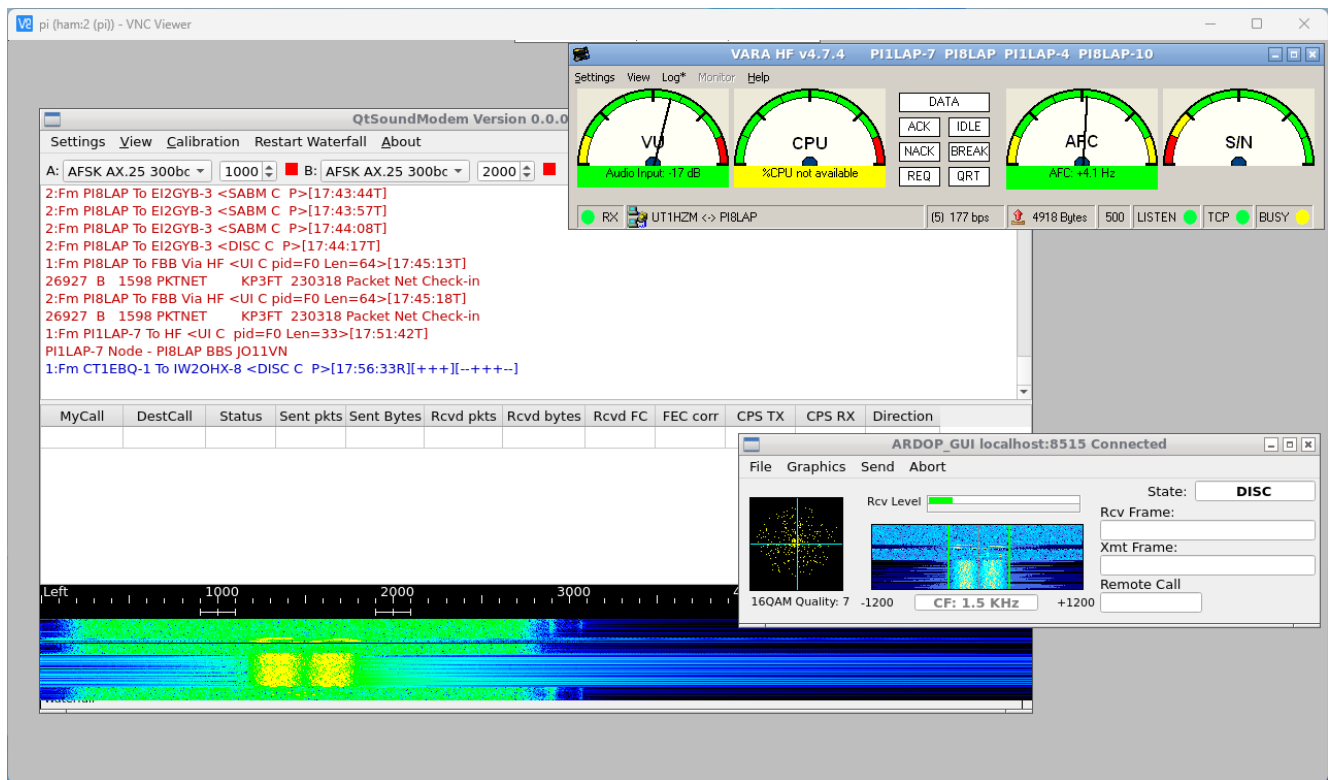


Vara500 with UT1HZM



```

Mar 18 17:52:25 PI1LAP VARAHF UT1HZM connected VARA HF v4.7.4
Mar 18 18:03:44 PI1LAP VARAHF Disconnecting by FQ
Mar 18 18:03:49 PI1LAP VARAHF UT1HZM Average S/N: -3.8 dB
Mar 18 18:03:49 PI1LAP VARAHF Disconnected TX: 7113 Bytes
(Max: 588 bps) RX: 148 Bytes (Max: 177 bps) Session Time:
11:24

```

```

17:52:25R CONNECTED UT1HZM PI8LAP 500 Port=4
17:52:25R HF Node PI1LAP-7 Port=4
17:52:25R Incoming Connect from UT1HZM on Port 4 Freq 14103800
Mode VARA 500
17:52:25R [BPQ-6.0.23.53-B1FWIHJM$]
17:52:25R Welcome to PI8LAP
17:52:25R PI8LAP->
17:52:25R [BPQ-6.0.23.53-B1FWIHJM$] Port=4
17:52:25R Welcome to PI8LAP Port=4
17:52:25R PI8LAP-> Port=4
17:52:52R [BPQ-6.0.23.1-B1FIHJM$] Port=4
17:52:52R ; MSGTYPES PTRB17000 Port=4
17:52:52R FF Port=4
17:52:53R [BPQ-6.0.23.1-B1FIHJM$]

```

17:52:53R ; MSGTYPES PTRB17000
17:52:53R FF
17:52:53R FA B CX2SA ARRL LETTER ARRL4111 15430
17:52:53R F> 13
17:52:53R FA B CX2SA ARRL LETTER ARRL4111 15430 Port=4
17:52:53R F> 13 Port=4
17:53:17R FS - Port=4
17:53:17R FF Port=4
17:53:17R FS -
17:53:17R FF
17:53:17R FA B CX2SA ARL PROP ARLP011 8312
17:53:17R FA B EI2GYB WW ASTRO 11947_EI2GYB 8603
17:53:17R F> 13
17:53:18R FA B CX2SA ARL PROP ARLP011 8312 Port=4
17:53:18R FA B EI2GYB WW ASTRO 11947_EI2GYB 8603 Port=4
17:53:18R F> 13 Port=4
17:53:36R FS -- Port=4
17:53:36R FF Port=4
17:53:36R FS --
17:53:37R FF
17:53:37R FA B EI2GYB WW ASTRO 11948_EI2GYB 7667
17:53:37R FA B KA3BVJ WW SWL 47523_KA3BVJ 4550
17:53:37R F> 01
17:53:37R FA B EI2GYB WW ASTRO 11948_EI2GYB 7667 Port=4
17:53:37R FA B KA3BVJ WW SWL 47523_KA3BVJ 4550 Port=4
17:53:37R F> 01 Port=4
17:54:05R FS -- Port=4
17:54:05R FF Port=4
17:54:05R FS --
17:54:05R FF
17:54:05R FA B EI2GYB WW ASTRO 11946_EI2GYB 10873
17:54:05R F> 88
17:54:06R FA B EI2GYB WW ASTRO 11946_EI2GYB 10873 Port=4
17:54:06R F> 88 Port=4
17:54:26R FS - Port=4
17:54:26R FF Port=4
17:54:27R FS -
17:54:27R FF
17:54:27R FA B CX2SA ARL KEP ARLK019 3851
17:54:27R FA B LU9DCE WW DXNEWS 6682_LU9DCE 9109
17:54:27R F> 44

17:54:27R FA B CX2SA ARL KEP ARLK019 3851 Port=4
17:54:27R FA B LU9DCE WW DXNEWS 6682_LU9DCE 9109 Port=4
17:54:27R F> 44 Port=4
17:54:48R FS -- Port=4
17:54:48R FF Port=4
17:54:48R FS --
17:54:48R FF
17:54:48R FA B LU9DCE WW LINUX 6683_LU9DCE 4222
17:54:48R FA B LU9DCE WW ALERT 6685_LU9DCE 3132
17:54:48R FA B LU9DCE WW HUMOR 6686_LU9DCE 1348
17:54:48R FA B LU9DCE WW PROPA 6690_LU9DCE 1245
17:54:48R FA B DJ5AV WW DX ARLD0011 5338
17:54:48R F> 71
17:54:48R FA B LU9DCE WW LINUX 6683_LU9DCE 4222 Port=4
17:54:48R FA B LU9DCE WW ALERT 6685_LU9DCE 3132 Port=4
17:54:48R FA B LU9DCE WW HUMOR 6686_LU9DCE 1348 Port=4
17:54:48R FA B LU9DCE WW PROPA 6690_LU9DCE 1245 Port=4
17:54:48R FA B DJ5AV WW DX ARLD0011 5338 Port=4
17:54:48R F> 71 Port=4
17:55:21R FS ----- Port=4
17:55:21R FF Port=4
17:55:21R FS -----
17:55:21R FF
17:55:21R FA B KF5JRV WW TODAY 1390_KF5JRV 1562
17:55:21R FA B LU9DCE WW DX 6688_LU9DCE 12713
17:55:21R F> 6C
17:55:21R FA B KF5JRV WW TODAY 1390_KF5JRV 1562 Port=4
17:55:21R FA B LU9DCE WW DX 6688_LU9DCE 12713 Port=4
17:55:21R F> 6C Port=4
17:55:41R FS -+ Port=4
17:55:41R FS -+
17:55:41R Compressed Message Comp Len 4845 Msg Len 12713 CRC
22d9
18:00:52R FF Port=4
18:00:52R FF
18:00:52R FA B LU9DCE WW ALL 6694_LU9DCE 2959
18:00:52R FA B G8MNY WW TECH 43050_GB7CIP 3265
18:00:52R FA B G8MNY WW ATV 43048_GB7CIP 4849
18:00:52R F> 6B
18:00:52R FA B LU9DCE WW ALL 6694_LU9DCE 2959 Port=4
18:00:52R FA B G8MNY WW TECH 43050_GB7CIP 3265 Port=4

18:00:52R FA B G8MNY WW ATV 43048_GB7CIP 4849 Port=4
18:00:52R F> 6B Port=4
18:01:12R FS +-- Port=4
18:01:12R FS +--
18:01:12R Compressed Message Comp Len 1189 Msg Len 2959 CRC
7410
18:02:27R FF Port=4
18:02:27R FF
18:02:27R FA B G8MNY WW TECH 43049_GB7CIP 12370
18:02:27R F> 29
18:02:27R FA B G8MNY WW TECH 43049_GB7CIP 12370 Port=4
18:02:27R F> 29 Port=4
18:02:46R FS - Port=4
18:02:46R FF Port=4
18:02:46R FS -
18:02:46R FF
18:02:46R FA B EI2GYB WW ASTRO 11979_EI2GYB 13237
18:02:46R F> 85
18:02:46R FA B EI2GYB WW ASTRO 11979_EI2GYB 13237 Port=4
18:02:46R F> 85 Port=4
18:03:09R FS - Port=4
18:03:09R FF Port=4
18:03:09R FS -
18:03:09R FF
18:03:09R FA B EI2GYB WW ASTRO 11980_EI2GYB 5741
18:03:09R FA B EI2GYB WW ASTRO 11981_EI2GYB 8756
18:03:09R F> 6E
18:03:10R FA B EI2GYB WW ASTRO 11980_EI2GYB 5741 Port=4
18:03:10R FA B EI2GYB WW ASTRO 11981_EI2GYB 8756 Port=4
18:03:10R F> 6E Port=4
18:03:34R FS -- Port=4
18:03:34R FF Port=4
18:03:34R FS --
18:03:34R FF
18:03:34R FQ
18:03:34R FQ Port=4
18:03:50R DISCONNECTED Port=4
18:03:50R UT1HZM Disconnected