

Dxspider secure login

From now on there is the possibility to set up an ssh tunnel to the Dxcluster server.

This gives the advantage that no plain text login and passwords are sent over telnet. And that your connection to the cluster is secured.

Why, suppressing fake spots and abuse of the network.

Howto

Send me your login username (call) and password you want to use. I will setup a account for you.

After this it possible to connect secure to the dxcluster.

Copy and past this line in your terminal. Change "call" with your username.

```
ssh -L 7300:localhost:7300 -N -p 7322 call@dx.packet-radio.nl
```

Look like this.

```
pi@ham:~/ssh $ ssh -L 7300:localhost:7300 -N -p 7322 testuser@dx.packet-radio.nl
#####
#                DxCluster PI1LAP                #
#####
#                Welcome to dx.packet-radio.nl!    #
#                You are entering into a secured area! #
#                This service is restricted to authorized users only. All #
#                activities on this system are logged. #
#                Disconnect IMMEDIATELY if you are not an authorized user! #
#####
testuser@dx.packet-radio.nl's password: █
```

Enter your password and leave the terminal window open.

After this nothing happens, but there is a secure tunnel.

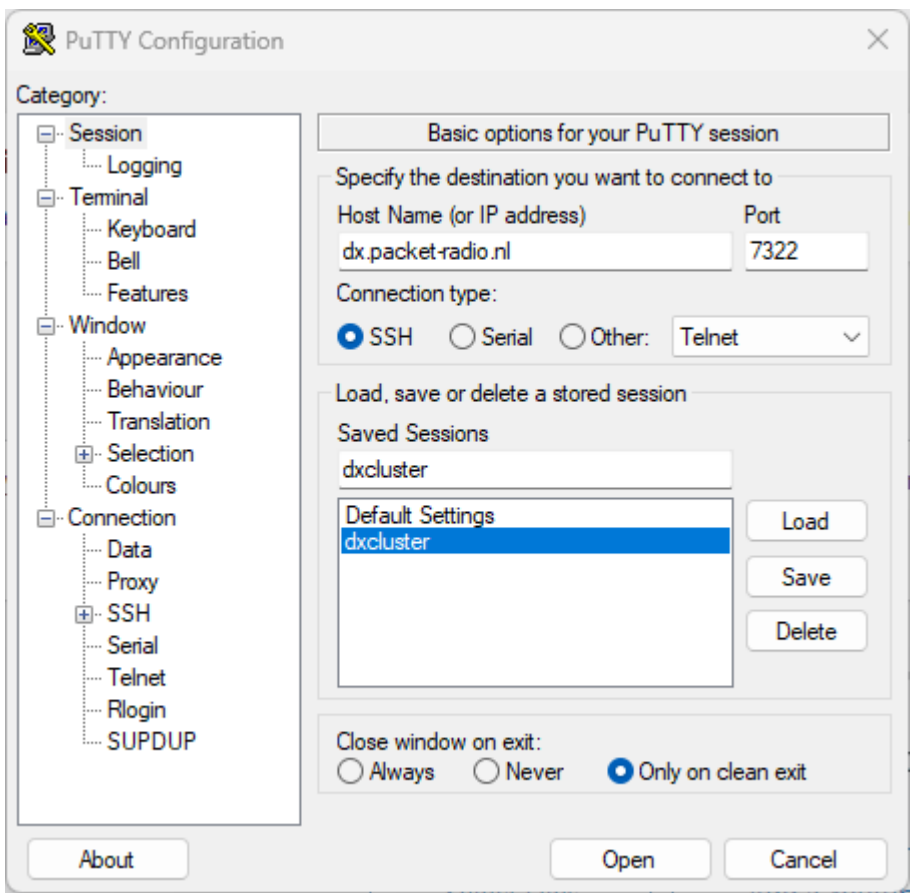
Now it is possible to connect the dxcluster on localhost:7300

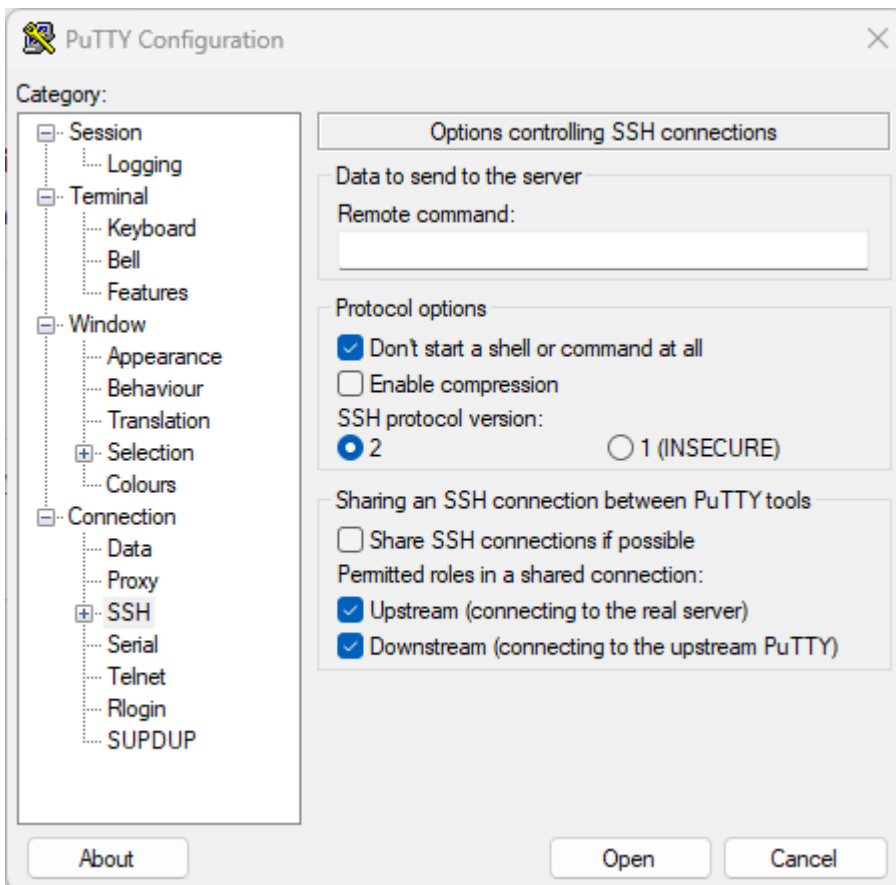
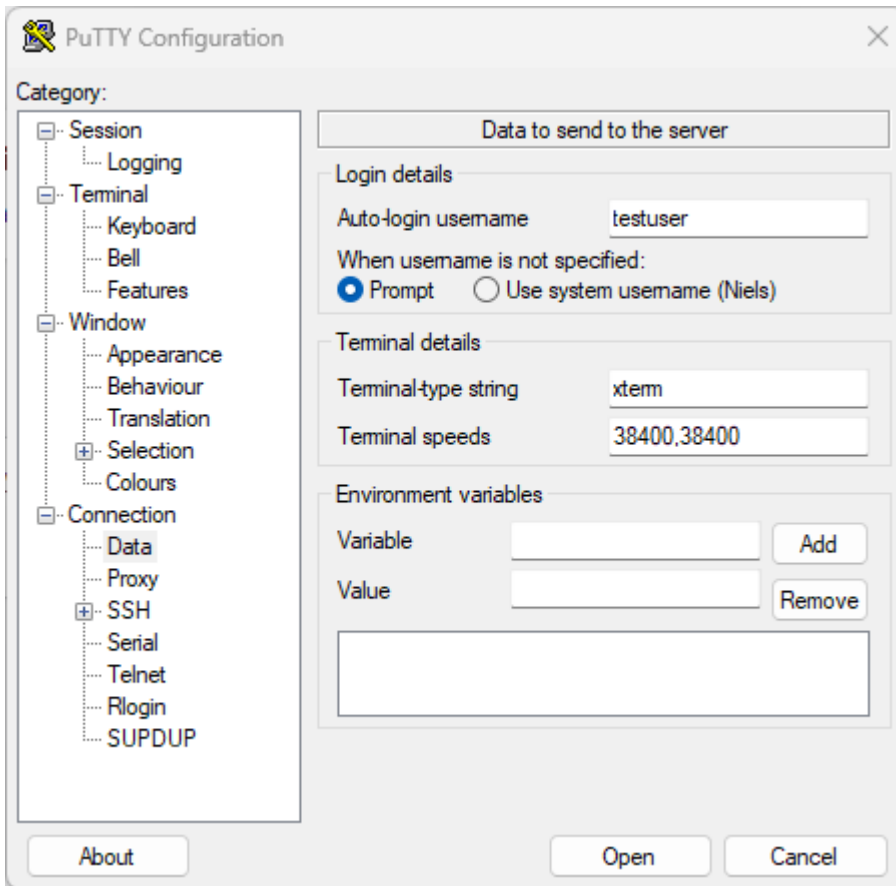
Open a new terminal window en telnet to localhost port 7300

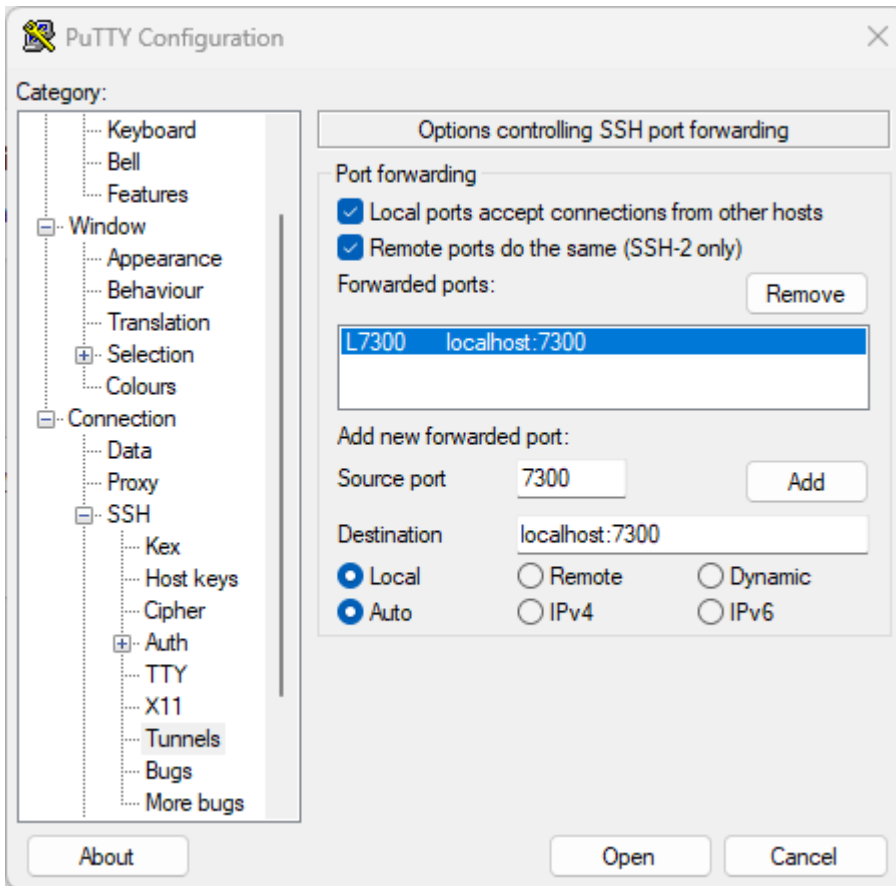
```
pi@ham:~ $ telnet localhost 7300
Trying ::1...
Connected to localhost.
Escape character is '^]'.
This is the PI1LAP DXcluster system running DXSpider/mojo Branch.
If you are getting echo and you don't want it, do: unset/echo
or (if you are a Microsoft telnet user) disable 'local echoing'.

+-----+
!           Warning: Computer Crime Act (1993) NL applies           !
! This system may only be accessed by Radio Amateurs using their real !
! callsigns and in accordance with their jurisdiction's licensing    !
!           conditions. All connections to this system are recorded.  !
+-----+
login:
```

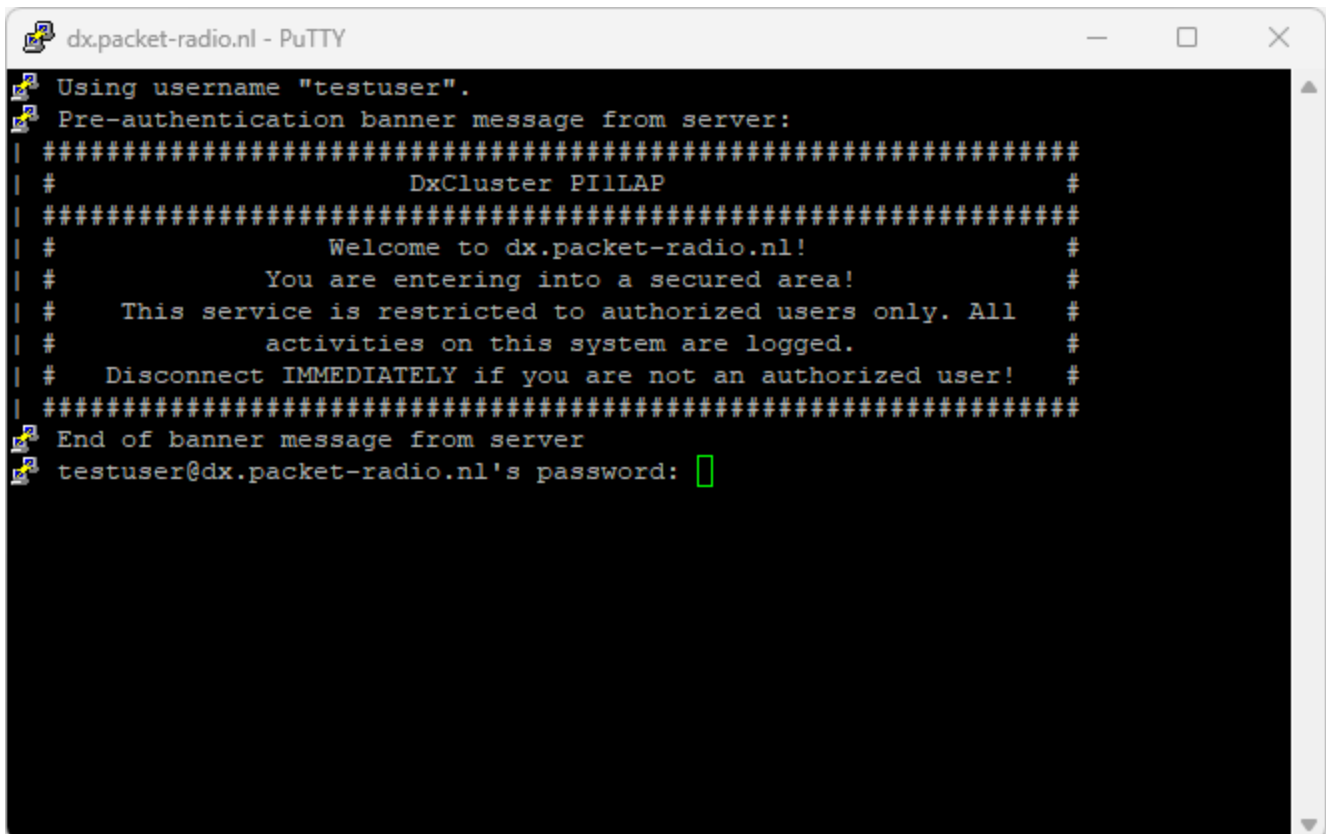
This is also possible with Putty.







Save and open a ssh connection.



```
Telnet localhost
This is the PI1LAP DXCluster system running DXSpider/mojo Branch.
If you are getting echo and you don't want it, do: unset/echo
or (if you are a Microsoft telnet user) disable 'local echoing'.

-----+
! Warning: Computer Crime Act (1993) NL applies !
! This system may only be accessed by Radio Amateurs using their real !
! callsigns and in accordance with their jurisdiction's licensing !
! conditions. All connections to this system are recorded. !
-----+
login:
```

Now it is possible to connect your log program or what you want to the DxCluster on localhost port 7300

